

TRAP DOOR FLIPS DOWN AND  
IN ALLOWING CABLES TO  
EXIT WHEN PLUGGED IN

(1) OPENING FOR  
DECORATOR INSERTS  
( PLASTER TABS MUST  
BE REMOVED )

(7) EXTRON MAAP  
ADAPTER PLATES  
( SUPPLIED BY OTHERS )

(1) 15A 125V DUPLEX  
RECEPTACLE

GASKETED STAINLESS LID  
ASSEMBLY - SCRUB WATER  
APPROVED

APPLY BEAD OF FIRESTOP  
SEALANT BETWEEN SLEEVE  
FLANGE AND CONCRETE

SET SCREW  
TO CONCRETE  
( 4 PLACES )

CONCRETE  
THICKNESS  
VARIES

(2) THREADED HUBS  
ACCEPTS (1) 1" & (1) 1 1/2"  
EMT CONNECTOR FOR  
COMMUNICATION OR A/V

THREADED HUB  
ACCEPTS 3/4"  
EMT CONNECTOR  
FOR POWER

SIDE SECTION



WELLMARK ELECTRIC  
PH: 519-650-4495  
wellmarkelectric.com



CAN/ULC S115 - 2 hr F  
ASTM E814 - 2 hr F

MATERIALS: LID ASSEMBLY: 1/8" STAINLESS STEEL BODY: 12 GA & 16 GA NICKEL COATED STEEL

NOTES:- INSTALLATION REQUIRES 6" CORE DRILL (MAX 6 1/8") - INDOOR & IN DRY LOCATIONS ONLY

TITLE



SERIES 470 POKE THROUGH FLOOR BOX

DIMENSIONS IN INCHES  
UNLESS OTHERWISE SPECIFIED

SCALE NTS

PART NO.

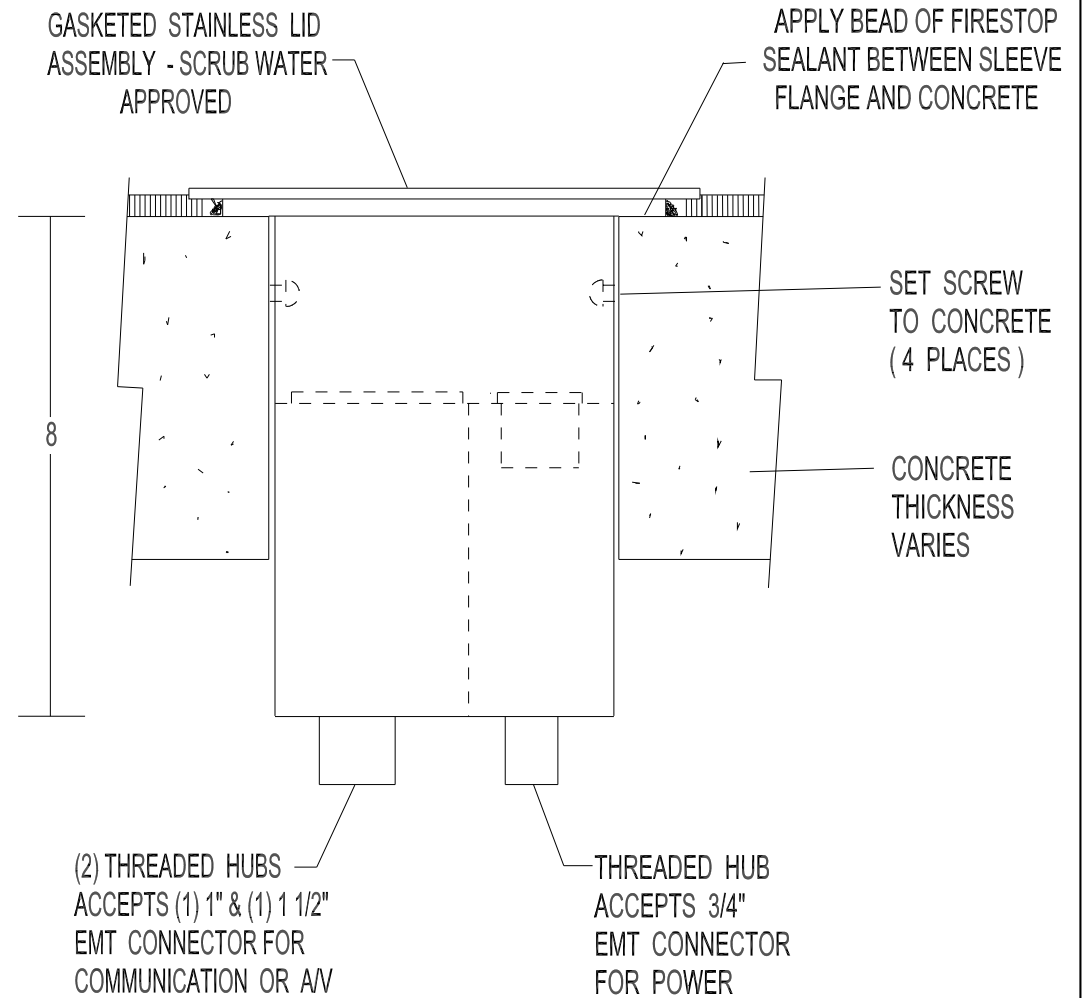
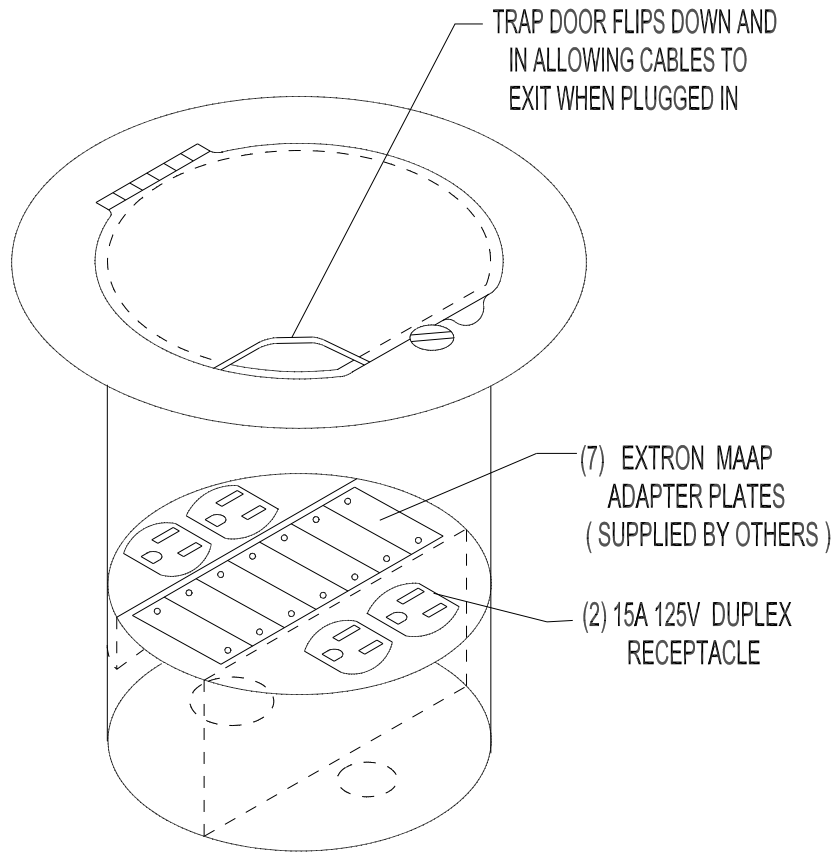
DR. BY

DATE 01 / 17

470-6-8-3-(7)MAAP-X

APP. BY

DATE



SIDE SECTION



WELLMARK ELECTRIC  
PH: 519-650-4495  
wellmarkelectric.com



CAN/ULC S115 - 2 hr F  
ASTM E814 - 2 hr F

MATERIALS: LID ASSEMBLY: 1/8" STAINLESS STEEL BODY: 12 GA & 16 GA NICKEL COATED STEEL

NOTES:- INSTALLATION REQUIRES 6" CORE DRILL (MAX 6 1/8") - INDOOR & IN DRY LOCATIONS ONLY



TITLE

SERIES 470 POKE THROUGH FLOOR BOX

DIMENSIONS IN INCHES  
UNLESS OTHERWISE SPECIFIED

SCALE NTS

PART NO.

DR. BY

DATE 01/17

470-6-8-3-(7)MAAP-3

APP. BY

DATE

TRAP DOOR FLIPS DOWN AND  
IN ALLOWING CABLES TO  
EXIT WHEN PLUGGED IN

(1) OPENING FOR  
DECORATOR INSERTS  
( PLASTER TABS MUST  
BE REMOVED )

(7) EXTRON MAAP  
ADAPTER PLATES  
( SUPPLIED BY OTHERS )

(1) 5-20R T-SLOT DUPLEX  
RECEPTACLE

GASKETED STAINLESS LID  
ASSEMBLY - SCRUB WATER  
APPROVED

APPLY BEAD OF FIRESTOP  
SEALANT BETWEEN SLEEVE  
FLANGE AND CONCRETE

SET SCREW  
TO CONCRETE  
( 4 PLACES )

CONCRETE  
THICKNESS  
VARIES

(2) THREADED HUBS  
ACCEPTS (1) 1" & (1) 1 1/2"  
EMT CONNECTOR FOR  
COMMUNICATION OR A/V

THREADED HUB  
ACCEPTS 3/4"  
EMT CONNECTOR  
FOR POWER

SIDE SECTION



WELLMARK ELECTRIC  
PH: 519-650-4495  
wellmarkelectric.com



CAN/ULC S115 - 2 hr F  
ASTM E814 - 2 hr F

MATERIALS: LID ASSEMBLY: 1/8" STAINLESS STEEL BODY: 12 GA & 16 GA NICKEL COATED STEEL

NOTES:- INSTALLATION REQUIRES 6" CORE DRILL (MAX 6 1/8") - INDOOR & IN DRY LOCATIONS ONLY



TITLE

SERIES 470 POKE THROUGH FLOOR BOX

DIMENSIONS IN INCHES  
UNLESS OTHERWISE SPECIFIED

SCALE NTS

PART NO.

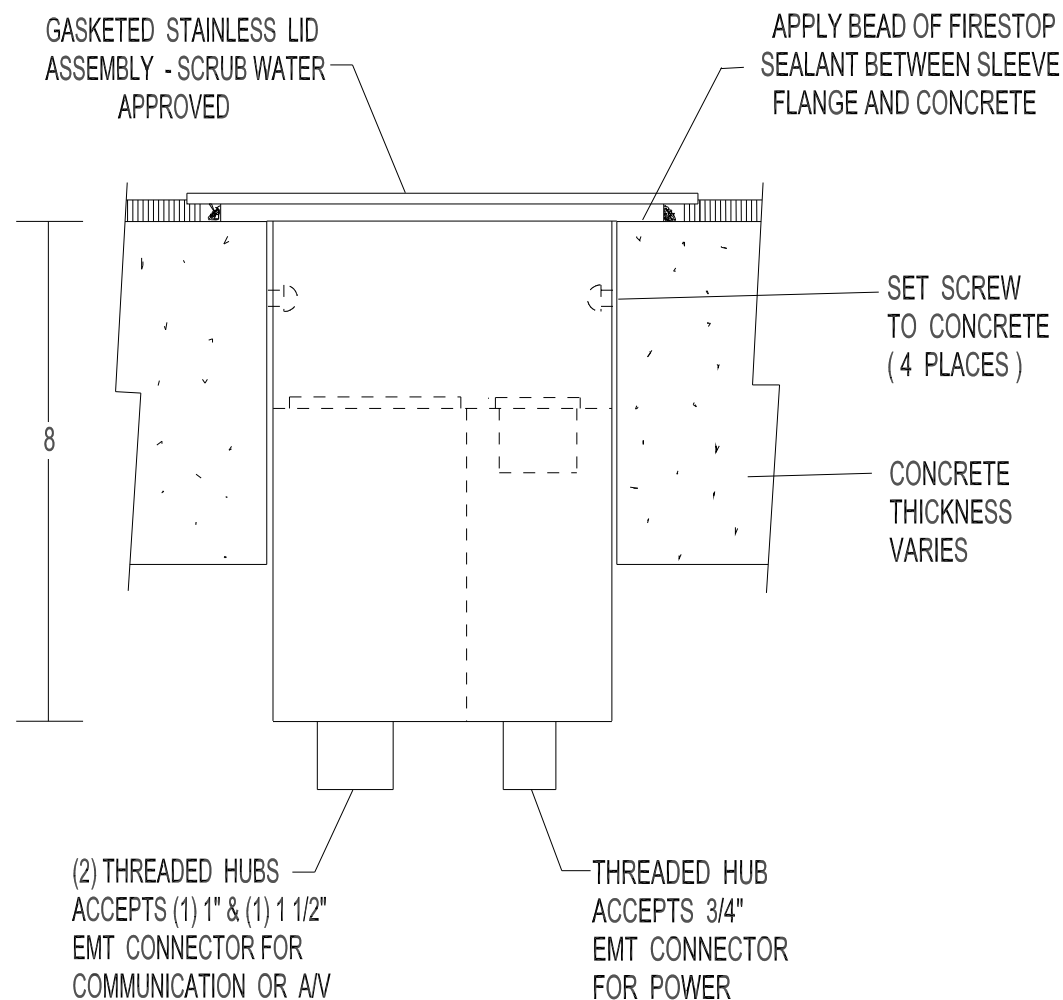
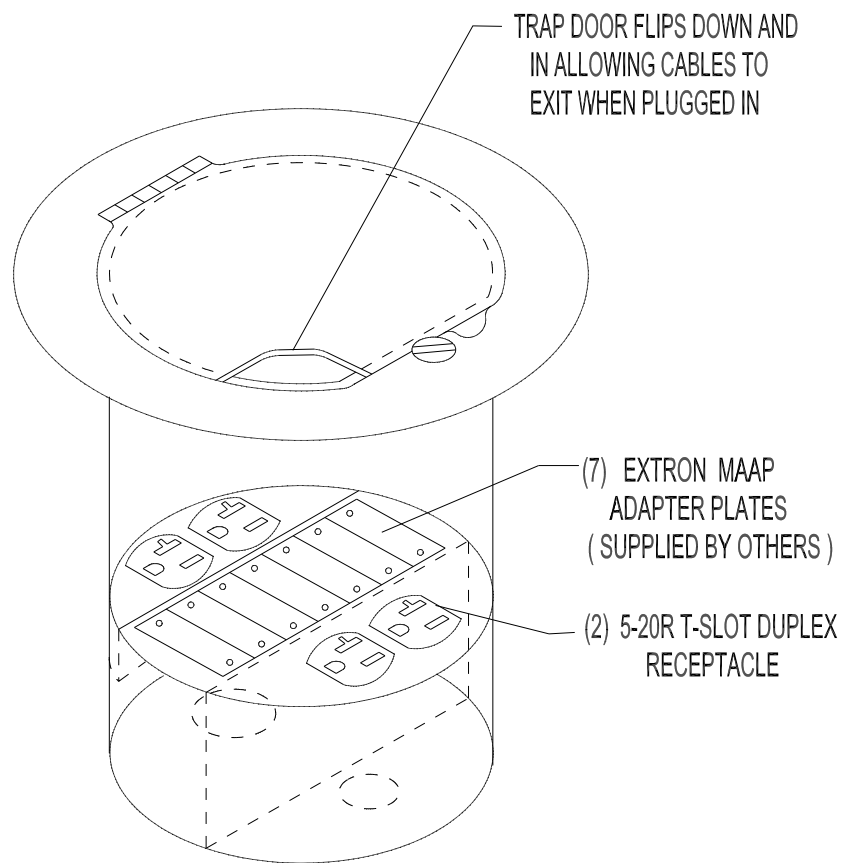
DR. BY

DATE 01 / 17

470-6-8-5-(7)MAAP-X

APP. BY

DATE



SIDE SECTION



WELLMARK ELECTRIC  
PH: 519-650-4495  
wellmarkelectric.com



CAN/ULC S115 - 2 hr F  
ASTM E814 - 2 hr F

MATERIALS: LID ASSEMBLY: 1/8" STAINLESS STEEL BODY: 12 GA & 16 GA NICKEL COATED STEEL

NOTES:- INSTALLATION REQUIRES 6" CORE DRILL (MAX 6 1/8") - INDOOR & IN DRY LOCATIONS ONLY



TITLE

SERIES 470 POKE THROUGH FLOOR BOX

DIMENSIONS IN INCHES  
UNLESS OTHERWISE SPECIFIED

SCALE NTS

PART NO.

DR. BY

DATE

01 / 17

APP. BY

DATE

470-6-8-5-(7)MAAP-5